

CATFORD

Jamestown

SA 5491

ENGINEERING PRODUCTS

All Prices Excluding GST

Phone: 0418 641 566

www.catford.com.au sales@catford.com.au

VICKERS CETOP VALVES



Please call or email for prices and availability.

CATFORD ENGINEERING PRODUCTS

Jamestown
SA 5491



Make	Model	Page
Eaton Vickers	Spool Selection Chart	92
Eaton Vickers	Standard Coils	92
Eaton Vickers	Cetop 3 High Performance	93
Eaton Vickers	Cetop 3 Compact	94
Eaton Vickers	Cetop 3 Modular Stack	95
Eaton Vickers	Cetop 3 Manual Control	97
Eaton Vickers	Cetop 3 Pneumatic Piloted Control	97
Eaton Vickers	Cetop 5 High Performance	98
Eaton Vickers	Cetop 5 Modular Stack	99

Charles:

Mobile 0418 641 566

Email sales@catford.com.au

Web www.catford.com.au

Due to fluctuations in the Australian dollar and the economic climate, please be advised that all prices are subject to change.

Please contact us to confirm pricing.

VICKERS CETOP VALVES



Cetop Spool Selection Chart

Type A and B Spool		Type C Spool Offsets		Type AL and BL Spool Offsets	
0A		0C		0AL	
2A		2C		2AL	
22A		6C		22AL	
24A		7C		24AL	
0B		22C		0BL	
2B		33C		2BL	
6B		52C		6BL	
7B		56C		7BL	
22B		8C		22BL	
33B				33BL	
521B				52BL	
561B				56BL	
8B				8BL	

NB ▲ Indicates Transient Condition Only

Note: Not all spool options listed above are available ex stock. However, we can order these in on an indent basis. Please contact THW for more information.



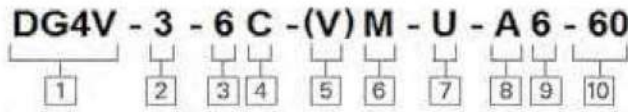
Standard Coils Quick Reference

Voltage	Coil Code	DG4V-3 High Performance		DG4V-3C Compact		DG4V-5	
		60 Design	Price (Ex. GST)	60 Design	List Price	20 Design	Price (Ex. GST)
24VAC	NN	865835	\$209.00	-	-	458502	
110VAC	A	507825	\$209.00	-	-	617475	
240VAC	ED	507827	\$209.00	-	-	617477	
12VDC	G	507847	\$220.00	6039765-001	\$32.00	617470	
24VDC	H	507848	\$220.00	6039764-001	\$32.00	617471	
48VDC	OJ	865882	\$220.00	-	-	457942	





Cetop 3 High Performance Solenoid Valves



1. Model Series
2. High Performance
3. Spool Type
4. Operation Code
 - A - Spring offset (end-end)
 - B - Spring offset (centre-end)
 - C - Spring centred (2 coils)
 - N - no springs, detent (2 coils)
 - L - Left hand build
5. Omit - Solenoid A is on Port B, Solenoid B is on Port A
 - V - Solenoid A is on Port A, Solenoid B is on Port B. Standard on 8C Valve
6. Denotes Solenoid Valve
7. DIN 43650 type wiring
8. Voltage
 - A - 110VAC 50Hz
 - ED - 240VAC 50Hz
 - G - 12VDC
 - H - 24VDC
9. Tank Pressure
 - 6 - 210 bar for AC coils
 - 7 - 210 bar for DC coils
10. Design code

Cetop Size	Max pressure (bar)	Max tank pressure (bar)	Max flow rate (lpm)*	IP rating
3	350	210	80*	65

Din Connectors		Price (Ex. GST)
Type	Part Number	
Std	OD.01.69.01.000000	
LED AC	43650AC	
LED DC	43650DC	

*Note: Flow rates and pressures drop vary with spool type, flow path, and or coil options. Consult catalogue for more information.

Part Number	Description	Voltage	Coil Part Number	Qty of Coils	Weight (kg)	Schematic	Price (Ex. GST)
859200	DG4V-3-0A-M-U-A6-60	110VAC	507825	1	1.6		
870092	DG4V-3-0A-M-U-ED6-60	240VAC	507827				
869858	DG4V-3-0A-M-U-G7-60	12VDC	507847				
869575	DG4V-3-0A-M-U-H7-60	24VDC	507848				
859195	DG4V-3-0B-M-U-A6-60	110VAC	507825				
859479	DG4V-3-0B-M-U-ED6-60	240VAC	507827				
859168	DG4V-3-0B-M-U-G7-60	12VDC	507847	2	2.2		
859160	DG4V-3-0B-M-U-H7-60	24VDC	507848				
859197	DG4V-3-0C-M-U-A6-60	110VAC	507825				
859199	DG4V-3-0C-M-U-ED6-60	240VAC	507827				
869576	DG4V-3-0C-M-U-G7-60	12VDC	507847				
859162	DG4V-3-0C-M-U-H7-60	24VDC	507848				
529763	DG4V-3-2A-M-U-A6-60	110VAC	507825	1	1.8		
859171	DG4V-3-2A-M-U-ED6-60	240VAC	507827				
859189	DG4V-3-2A-M-U-G7-60	12VDC	507847				
529762	DG4V-3-2A-M-U-H7-60	24VDC	507848				
859208	DG4V-3-2B-M-U-A6-60	110VAC	507825				
869944	DG4V-3-2B-M-U-ED6-60	240VAC	507827				
859204	DG4V-3-2B-M-U-G7-60	12VDC	507847	2	2.2		
859210	DG4V-3-2B-M-U-H7-60	24VDC	507848				
529761	DG4V-3-2C-M-U-A6-60	110VAC	507825				
859173	DG4V-3-2C-M-U-ED6-60	240VAC	507827				
859212	DG4V-3-2C-M-U-G7-60	12VDC	507847				
529760	DG4V-3-2C-M-U-H7-60	24VDC	507848				
529765	DG4V-3-2N-M-U-A6-60	110VAC	507825	2	2.2		
869939	DG4V-3-2N-M-U-ED6-60	240VAC	507827				
889962	DG4V-3-2N-M-U-G7-60	12VDC	507847				
529764	DG4V-3-2N-M-U-H7-60	24VDC	507848				
859177	DG4V-3-6C-M-U-A6-60	110VAC	507825				
859179	DG4V-3-6C-M-U-ED6-60	240VAC	507827				
859165	DG4V-3-6C-M-U-G7-60	12VDC	507847	2	2.2		
565465	DG4V-3-6C-M-U-H7-60	24VDC	507848				
02-144961	DG4V-3-8C-VM-U-A6-61	110VAC	507825				
02-311543	DG4V-3-8C-VM-U-ED6-61	240VAC	507827				
02-144957	DG4V-3-8C-VM-U-G7-61	12VDC	507847				
02-145162	DG4V-3-8C-VM-U-H7-61	24VDC	507848				

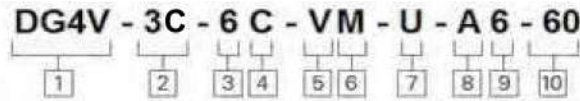
Note: Bolts are sold separately, Part Number: 616452, List Price: \$32.00 M5 x 30mm SHCS.



VICKERS CETOP VALVES



Cetop 3 Compact Solenoid Valves



- | | |
|--|---|
| <ol style="list-style-type: none"> 1. Model Series 2. Standard Performance 3. Spool Type 4. Operation Code <ul style="list-style-type: none"> A - Spring offset (end-end) B - Spring offset (centre-end) C - Spring centred (2 coils) N - no springs, detent (2 coils) L - Left hand build 5. Omit - Solenoid A is on Port B, Solenoid B is on Port A <ul style="list-style-type: none"> V - Solenoid A is on Port A, Solenoid B is on Port B. Standard on 8C Valve | <ol style="list-style-type: none"> 6. Denotes Solenoid Valve 7. DIN 43650 type wiring 8. Voltage <ul style="list-style-type: none"> G - 12VDC H - 24VDC 9. Tank Pressure <ul style="list-style-type: none"> 5 - 100 bar 10. Design code |
|--|---|

Cetop Size	Max pressure (bar)	Max tank pressure (bar)	Max flow rate (lpm*)	IP rating	Din Connectors		Price (Ex. GST)
					Type	Part Number	
3	350	210	40*	65	Std	OD.01.69.01.000000	
					LED AC	43650AC	
					LED DC	43650DC	

*Note: Flow rates and pressures drop vary with spool type, flow path, and or coil options. Consult catalogue for more information.

Part Number	Description	Voltage	Coil Part Number	Qty of Coils	Weight (kg)	Schematic	Price (Ex. GST)
6040739-001	DG4V-3C-0A-M-U-G5-60	12VDC	6039765-001	1	1.8		
6040347-001	DG4V-3C-0A-M-U-H5-60	24VDC	6039764-001				
6040745-001	DG4V-3C-0B-M-U-G5-60	12VDC	6039765-001	1	1.8		
6047044-001	DG4V-3C-0B-M-U-H5-60	24VDC	6039764-001				
6040743-001	DG4V-3C-0C-M-U-G5-60	12VDC	6039765-001	2	2.2		
6040742-001	DG4V-3C-0C-M-U-H5-60	24VDC	6039764-001				
6040749-001	DG4V-3C-2A-M-U-G5-60	12VDC	6039765-001	1	1.8		
6040748-001	DG4V-3C-2A-M-U-H5-60	24VDC	6039764-001				
6040739-001	DG4V-3C-0A-M-U-G5-60	12VDC	6039765-001	1	1.8		
6040347-001	DG4V-3C-0A-M-U-H5-60	24VDC	6039764-001				
6039701-001	DG4V-3C-2C-M-U-G5-60	12VDC	6039765-001	2	2.2		
6039700-001	DG4V-3C-2C-M-U-H5-60	24VDC	6039764-001				
6040768-001	DG4V-3C-6C-M-U-G5-60	12VDC	6039765-001				
6040348-001	DG4V-3C-6C-M-U-H5-60	24VDC	6039764-001				

Note: Bolts Kits are sold separately, Part Number: 616452, List Price: \$32 M5 x 30mm SHCS (for single stack valves).



Cetop 3 Modular Stack Valves

Control Function	Base Model	Check Direction	Control Flow / Location	Control Range	Adjust Type	Aux. Code	Design Code
Single Relief	DGMC-3	N/A	PT / AT / BT / AB	A / B / C / G	W	(B)	41
Dual Relief	DGMC2-3	N/A	AB / AT	A / B / C / G	W	***W-(B)	41
Counterbalance	DGMR-3	N/A	TA	A / B / C / F	W	(B)	41
Sequence	DGMR1-3	N/A	PP	A / B / C / F	W	(B)	41
Reducing/ Relieving	DGMX2-3	N/A	PP / PA / PB	A / B / C / F	W	B	41
Single Check	DGMDC-3	X / Y	P / T / A / B	K / M / N	N/A	N/A	41
Dual Check	DGMDC-3	Y	A	K / M / N	N/A	BK / M / N	41
Single Pilot Check	DGMPC-3	NO DECOMP	AB / BA	K / M / N	N/A	N/A	41
Double Pilot Check	DGMPC-3	NO DECOMP	AB	K / M / N	N/A	DBAK / M / N	41
Single Flow Regulator	DGMFN-3	X / Y / Z	P / T / A / B	1 / 2	W	N/A	41
Dual Flow Regulator	DGMFN-3	X / Y	A	1 / 2	W	B1 / 2W	41

Check Directions

- X - Meter in (free flow away from actuator)
- Y - Meter out (free flow towards the actuator)
- Z - With out reverse check for DGMFN-3

Control Flow / Location

- The two digit code for relief valves denotes the controlled oil flow from then to for example PT means P to T port
- The two digit code for pilot operated valves denotes the main location and the pilot source for example AB means in Line A but the pilot is coming from B
- A one digit code denotes the control location

Aux. Code

With Dual controls, second function (opposite side) will be coded in the similar manner with 1st function. Single "B" represents gauge port option with G1/4

Adjustment Type

- W - Screw + Locknut (Standard)
- H - Hand knob
- K - Micrometer with key lock

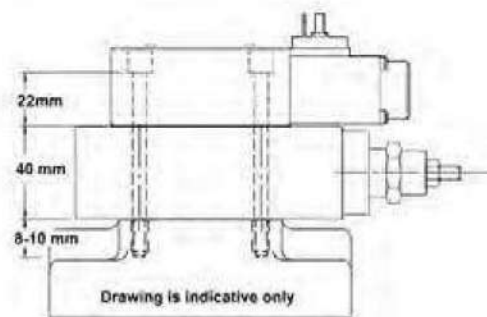
Control Range

Relief (and Dual Relief)	Other Pressure Controls	Check and Pilot Check	Flow Regulator
A - 3 - 50 bar	A - 3 - 30 bar	K - 1 bar	1 - Fine Control (55lpm @ 60 bar)
B - 3 - 100 bar	B - 3.5 - 70 bar	M - 2.5 bar	2 - Standard control (55lpm @ 13 bar)
C - 10 - 200 bar	C - 10 - 140 bar	N - 5 bar	
G - 50 - 315 bar	F - 20 - 250 bar		

Bolt Kits / Stud Kits

No. of Modular Stack Valves	Bolt / Stud Length (mm)	Part Number	Price (Ex. GST)
1	70	464125	
2	110	466840	
3	150	466844	

Notes: Each Modular Stack Valve is 40mm high
Cetop 3 Valve depth = 22mm
Subplate thread engagement 8 - 10 mm



Part Number	Description	Function	Plate Thickness (mm)	Max Pressure (bar)	Aux. Code	Price (Ex. GST)
466385	DGMA-3-B-10	Blanking Plate	10	315		
466386	DGMA-3-C1-10	Cross over plate P to A, B to T	10	315		
466387	DGMA-3-C2-10	Cross over plate P to B, A to T	10	315		
400733	DGAM-3-01-10R	Adaptor Plate, Cetop 3 (top) to Cetop 5	21 (onto Cetop 5)	210		

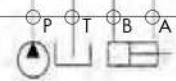


VICKERS CETOP VALVES



Cetop 3 Modular Stack Valves

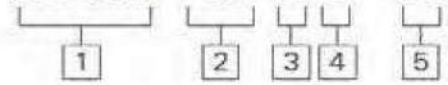
Part Number	Description	Function		Height (mm)	Price (Ex. GST)
869640	DGMC-3-PT-BW-41	Single Relief		40	
694419	DGMC-3-PT-CW-41				
869641	DGMC-3-PT-GW-41				
02-108716	DGMC-3-AT-GW-41	Dual Relief		40	
869627	DGMC2-3-AB-BW-BA-BW-41				
869628	DGMC2-3-AB-CW-BA-CW-41				
871708	DGMC2-3-AB-GW-BA-GW-41				
870074	DGMC2-3-AT-CW-BT-CW-4	Single Check		40	
694415	DGMDC-3-Y-PK-41				
694416	DGMDC-3-X-TK-4	Single Pilot Check		40	
870024	DGMPC-3-ABK-41				
870023	DGMPC-3-BAK-40	Dual Pilot Check		40	
694400	DGMPC-3-ABK-BAK-41				
870041	DGMFN-3-ZP1W-41	Single Flow Control		40	
870043	DGMFN-3-ZP2W-41				
870042	DGMFN-3-ZT1W-41				
02-108917	DGMFN-3-X-A2W-41	Single Flow Control with Reverse Check		40	
694413	DGMFN-3-X-A1W-B1W-41	Dual Flow Control with Reverse Check		40	
694414	DGMFN-3-X-A2W-B2W-41				
694411	DGMFN-3-Y-A1W-B1W-41				
694412	DGMFN-3-Y-A2W-B2W-41				
870031	DGMX2-3-PA-BW-B-40	Reducing / Relieving Valves		40	
870033	DGMX2-3-PA-FW-B-40				
870267	DGMX2-3-PB-CW-B-40			40	
870021	DGMX2-3-PP-AW-B-40				
870036	DGMX2-3-PP-BW-B-40				
870037	DGMX2-3-PP-CW-B-40				
870038	DGMX2-3-PP-FW-B-40				





Cetop 3 Manual Control Valves

DG17V - 3 - 2 C - 60



- 1 - Manual Control
- 2 - Cetop 3
- 3 - Spool Configuration
- 4 - A Spring Offset
- C Spring Centred
- N Detented
- 5 - Design Code

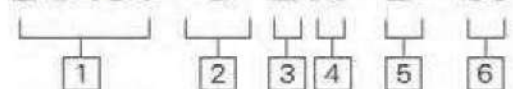
Cetop Size	Max pressure (bar)	Max tank pressure (bar)	Max flow rate (lpm)*
3	350	100	75*

Part Number	Description	Weight (kg)	Schematic	Price (Ex. GST)
02-127342	DG17V-3-2A-60	1.8		
02-127343	DG17V-3-2C-60			
02-127344	DG17V-3-2N-60			
02-135316	DG17V-3-6C-60			
02-135673	DG17V-3-6N-60			

*Note: Flow rates and pressures drop vary with spool type, flow path, and or coil options. Consult catalogue for more information.

VICKERS Cetop 3 Pneumatic Piloted Control Valves

DG18V - 3 - 2 A - B - 60



- 1 - Pneumatic Piloted
- 2 - Cetop 3
- 3 - Spool Configuration
- 4 - A Spring Offset
- C Spring Centred
- 5 - B G1/8 Pilot Port(s)
- 6 - Design Code

Cetop Size	Max pressure (bar)	Max tank pressure (bar)	Max flow rate (lpm)*
3	350	100	26-76*

Part Number	Description	Weight (kg)	Schematic	Price (Ex. GST)
02-145115	DG18V-3-0C-B-60	1.5		
02-145116	DG18V-3-2A-B-60	1.2		
02-149004	DG18V-3-2C-B-60	1.5		
02-149005	DG18V-3-6C-B-60			

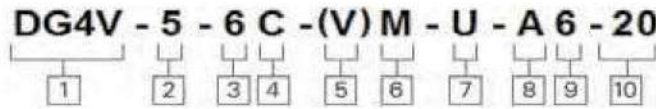
*Note: Flow rates and pressures drop vary with spool type, flow path, and or coil options. Consult catalogue for more information.



VICKERS CETOP VALVES



Cetop 5 High Performance Solenoid Valves



- | | |
|--|--|
| <ol style="list-style-type: none"> 1. Model Series 2. Standard Performance 3. Spool Type 4. Operation Code <ul style="list-style-type: none"> A - Spring offset (end-end) B - Spring offset (centre-end) C - Spring centred (2 coils) N - no springs, detent (2 coils) L - Left hand build 5. Omit - Solenoid A is on Port B, Solenoid B is on Port A
V - Solenoid A is on Port A, Solenoid B is on Port B. Standard on 8C Valve 6. Denotes Solenoid Valve | <ol style="list-style-type: none"> 7. DIN 43650 type wiring 8. Voltage <ul style="list-style-type: none"> A - 110VAC 50Hz ED - 240VAC 50Hz G - 12VDC H - 24VDC 9. Tank Pressure <ul style="list-style-type: none"> 6 - 160 bar with DC Coils - 120 bar with AC Coils 10. Design code |
|--|--|

Cetop Size	Max pressure (bar)	Max tank pressure (bar)	Max flow rate (lpm)*	IP rating
5	315	160**	120	65

Din Connectors		Price (Ex. GST)
Type	Part Number	
Std	OD.01.69.01.000000	
LED AC	43650AC	
LED DC	43650DC	

*Note: Flow rates and pressures drop vary with spool type, flow path, and or coil options. Consult catalogue for more information.

**Note: 160 Bar for DC coils, 120 Bar for AC Coils.

Part Number	Description	Voltage	Coil Part Number	Qty of Coils	Weight (kg)	Schematic	Price (Ex. GST)
616946	DG4V-5-0A-M-U-A6-20	110VAC	617475	1	4.2		
720421	DG4V-5-0A-M-U-ED6-20	240VAC	617477				
616957	DG4V-5-0A-M-U-G6-20	12VDC	617470				
616956	DG4V-5-0A-M-U-H6-20	24VDC	617471				
459215	DG4V-5-0B-J-M-U-A6-20	110VAC	617475				
991271	DG4V-5-0B-M-U-ED6-20	240VAC	617477				
639598	DG4V-5-0B-J-M-U-G6-20	12VDC	617470	2	6.3		
459788	DG4V-5-0B-J-M-U-H6-20	24VDC	617471				
616789	DG4V-5-0C-M-U-A6-20	110VAC	617475				
991201	DG4V-5-0C-M-U-ED6-20	240VAC	617477				
616790	DG4V-5-0C-J-M-U-G6-20	12VDC	617470				
02-333617	DG4V-5-0C-J-M-U-H6-20	24VDC	617471				
616769	DG4V-5-2A-M-U-A6-20	110VAC	617475	1	4.2		
991270	DG4V-5-2A-M-U-ED6-20	240VAC	617477				
616770	DG4V-5-2A-J-M-U-G6-20	12VDC	617470				
02-333582	DG4V-5-2A-J-M-U-H6-20	24VDC	617471				
616941	DG4V-5-2B-M-U-A6-20	110VAC	617475				
992690	DG4V-5-2B-M-U-ED6-20	240VAC	617477				
639749	DG4V-5-2B-M-U-G6-20	12VDC	617470	2	6.3		
638972	DG4V-5-2B-J-M-U-H6-20	24VDC	617471				
616777	DG4V-5-2C-M-U-A6-20	110VAC	617475				
639610	DG4V-5-2C-M-U-ED6-20	240VAC	617477				
616778	DG4V-5-2C-J-M-U-G6-20	12VDC	617470				
02-333579	DG4V-5-2C-J-M-U-H6-20	24VDC	617471				
616773	DG4V-5-2N-M-U-A6-20	110VAC	617475	2	6.3		
991272	DG4V-5-2N-M-U-ED6-20	240VAC	617477				
616774	DG4V-5-2N-J-M-U-G6-20	12VDC	617470				
616772	DG4V-5-2N-J-M-U-H6-20	24VDC	617471				
616781	DG4V-5-6C-M-U-A6-20	110VAC	617475				
639609	DG4V-5-6C-M-U-ED6-20	240VAC	617477				
616782	DG4V-5-6C-J-M-U-G6-20	12VDC	617470	2	6.3		
02-333580	DG4V-5-6C-J-M-U-H6-20	24VDC	617471				
616785	DG4V-5-8C-J-VM-U-A6-20	110VAC	617475				
991249	DG4V-5-8C-J-VM-U-ED6-20	240VAC	617477				
616786	DG4V-5-8C-J-VM-U-G6-20	12VDC	617470				
02-333581	DG4V-5-8C-J-VM-U-H6-20	24VDC	617471				

Note: Bolts Kits are sold separately, Part Number 466310, List Price \$33 M6 x 40mm SHCS (for single stack valves).



Cetop 5 Modular Stack Valves

Control Function	Base Model	Check Direction	Control Flow / Location	Control Range	Adjust Type	Aux. Code	Design Code
Single Relief	DGMC-5	N/A	PT / AT / BT	A / B / F / G	H / W	(B)	30
Dual Relief	DGMC2-5	N/A	AB / AT	A / B / F / G	H / W	***W-(B)	30
Counterbalance	DGMR-5	N/A	A	1 - F	W		30
Sequence	DGMR1-5	N/A	PP	A / B / F / G	W	B	30
Reducing/ Relieving	DGMX2-5	N/A	PP / PA / PB	A / B / F / G	H / W	B	30
Single Check	DGMDC-5	X / Y	P / T / A / B	K / M / N	N/A		30
Dual Check	DGMDC-5	X / Y	A	K / M / N	N/A	BK / M / N	30
Single Pilot Check	DGMPC-5	NO DECOMP	AB / BA	K / M / N	N/A		30
Double Pilot Check	DGMPC-5	NO DECOMP	AB	K / M / N	N/A	BAK / M / N	30
Double Pilot Check	DGMPC-5	D	AB	K / M / N	N/A	DBAK / M / N	30
Single Flow Regulator	DGMFN-5	X / Y	P / A / B	1 / 2	W		30
Dual Flow Regulator	DGMFN-5	X / Y	A	1 / 2	W	B2W	30

Check Direction

- X - Meter in (free flow away from actuator)
- Y - Meter out (free flow towards the actuator)

Control Flow / Location

- The two digit code for relief valves denotes the controlled oil flow from then to for example PT means P to T port
- The two digit code for pilot operated valves denotes the main location and the pilot source for example AB means in Line A but the pilot is coming from B
- A one digit code denotes the control location

Aux. Code

With dual controls, second function (opposite side) will be coded in the similar manner with 1st function. Single "B" represents gauge port option with G1/4

Adjustment Type

- W - Screw + Locknut (Standard)
- H - Hand knob
- K - Micrometer with key lock

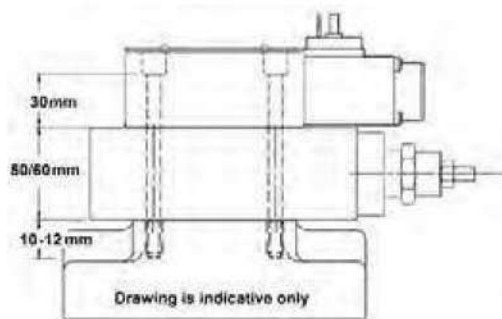
Control Range

Relief (and Dual Relief)	Other Pressure Controls	Check and Pilot Check	Flow Regulator	Counterbalance
A - 4 - 50 bar	A - up to 50 bar	K - 1 bar	1 - Fine Control (120lpm @ 60 bar)	1 - 4:1 Pilot ratio
B - 4 - 100 bar	B - up to 100 bar	M - 2.5 bar	2 - Standard control (120lpm @ 10 bar)	2 - 10:1 Pilot ratio
C - 4 - 200 bar	F - up to 200 bar	N - 5 bar		
G - 4 - 315 bar	G - up to 315 bar			

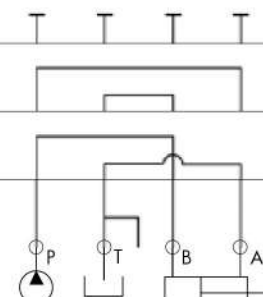
Bolt Kits / Stud Kits

No. of Modular Stack Valves	Bolt / Stud Length (mm)	Part Number	Price (Ex. GST)
1 (50mm)	90	534576	
1 (60mm)	110	978480	
2 (50mm)	140	638878	
3 (50mm)	188	978460	

Notes: Most Cetop 5 Modular Stack valves are 50 or 60mm in height
Cetop 5 Valve Height = 30mm
Subplate thread engagement 12 mm



Part Number	Description	Function	Plate Thickness (mm)	Max Pressure (bar)	Aux. Code	Price (Ex. GST)
978451	DGMA-5-B-10	Blanking Plate	37	315		
978452	DGMA-5-C1-10	Cross over plate P to A, B to T	37	315		
978453	DGMA-5-C2-10	Cross over plate P to B, A to T	37	315		
400733	DGAM-3-01-10R	Adaptor Plate, Cetop 3 (top) to Cetop 5	21 (onto Cetop 5)	210		



VICKERS CETOP VALVES



Cetop 5 Modular Stack Valves

Part Number	Description	Function	Diagram	Height (mm)	Price (Ex. GST)
879035	DGMC-5-PT-BH-B-30	Single Relief		60	
879036	DGMC-5-PT-GH-B-30				
879044	DGMC2-5-AB-GH-BA-GH-30	Dual Relief		60	
867341	DGMwDC-5-Y-PK-30	Single Check		50	
867342	DGMDC-5-X-TK-30				
867339	DGMPC-5-ABK-30	Single Pilot Check		50	
867340	DGMPC-5-BAK-30				
867364	DGMPC-5-ABK-BAK-30	Dual Pilot Check		50	
867335	DGMFN-5-X-A2W-B2W-30	Dual Flow Control with Reverse Check		50	
867332	DGMFN-5-Y-A2W-B2W-30				
879050	DGMX2-5-PA-GH-B-30	Reducing / Relieving Valves		50	
879045	DGMX2-5-PP-BH-B-30				
02-140896	DGMX2-5-PP-FH-B-30				
879046	DGMX2-5-PP-GH-B-30				