

# CATFORD

Jamestown  
SA 5491

# ENGINEERING PRODUCTS

All Prices Excluding GST

Phone: 0418 641 566

[www.catford.com.au](http://www.catford.com.au) [sales@catford.com.au](mailto:sales@catford.com.au)

GEAR PUMPS



Please call or email for prices and availability.

# CATFORD CE ENGINEERING PRODUCTS

Jamestown  
SA 5491



| Make | Model                      | Page |
|------|----------------------------|------|
| THW  | High Pressure Gear Pumps   | 102  |
| THW  | High Pressure Double Pumps | 109  |
| THW  | Changing Rotation          | 111  |

Due to fluctuations in the Australian dollar and the economic climate, please be advised that all prices are subject to change.  
Please contact us to confirm pricing.

**Charles:**

Mobile 0418 641 566

Email [sales@catford.com.au](mailto:sales@catford.com.au)

Web [www.catford.com.au](http://www.catford.com.au)





## High Pressure Gear Pumps

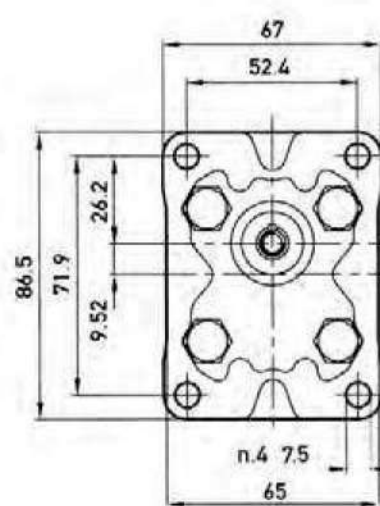
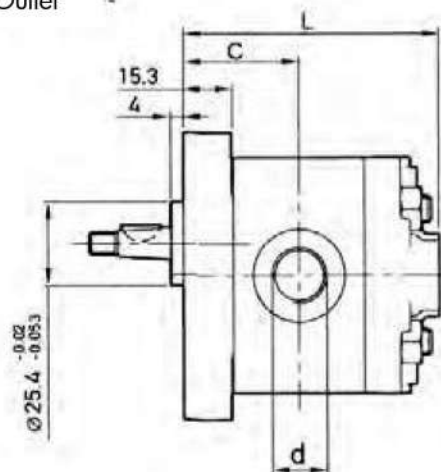
### P1B0 Group 1 DIN Mount

#### DIN Mount Group 1 with 1:8 Tapered Shaft - Clockwise Rotation

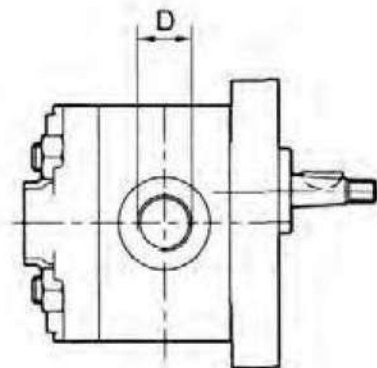
| Part Number | Displacement (cm <sup>3</sup> /rev) | Continuous Pressure (bar) | Intermittent Pressure (bar) | Max Speed (rpm) | Min Speed (rpm) | L (mm) | C (mm) | Inlet D | Outlet d | Unpacked weight (kg) | Price (Ex. GST) |
|-------------|-------------------------------------|---------------------------|-----------------------------|-----------------|-----------------|--------|--------|---------|----------|----------------------|-----------------|
| P1B0D1.1TOG | 1.1                                 | 230                       | 250                         | 6000            | 1000            | 74     | 33     | G3/8    | G1/4     | 1                    |                 |
| P1B0D1.6TOG | 1.6                                 | 230                       | 250                         | 6000            | 1000            | 76     | 34     | G3/8    | G1/4     | 1                    |                 |
| P1B0D2.1TOG | 2.1                                 | 230                       | 250                         | 6000            | 1000            | 78     | 35     | G3/8    | G1/4     | 1.1                  |                 |
| P1B0D3.2TOG | 3.2                                 | 210                       | 230                         | 5000            | 800             | 82     | 37     | G3/8    | G1/4     | 1.1                  |                 |
| P1B0D4.2TOG | 4.2                                 | 210                       | 230                         | 4000            | 800             | 86     | 39     | G3/8    | G1/4     | 1.2                  |                 |
| P1B0D5.8TOG | 5.8                                 | 190                       | 210                         | 3000            | 600             | 92     | 42     | G3/8    | G1/4     | 1.2                  |                 |

### Dimensions

Outlet



Inlet

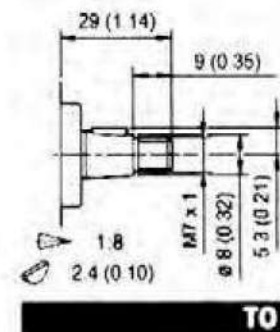


### Features

- Aluminium construction with aluminium front and rear housings
- Rotation is field reversible
- Torque shaft retaining Nut M7 to 8 Nm

### Seal Kit

| Part Number | List Price |
|-------------|------------|
| P1          |            |



**T0**  
Max Torque 25Nm



## High Pressure Gear Pumps

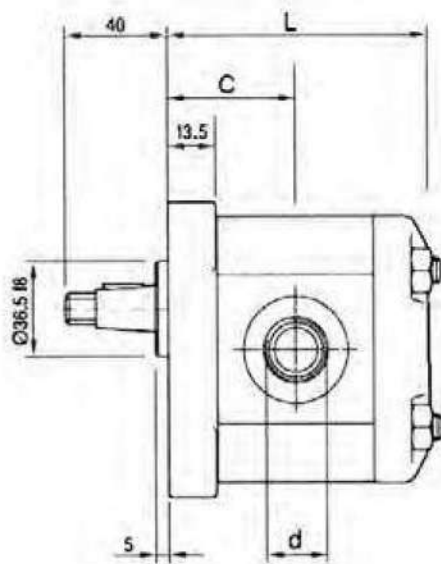
### P2B0 Group 2 DIN Mount

#### DIN Mount Group 2 with 1:8 Tapered Shaft - Clockwise Rotation

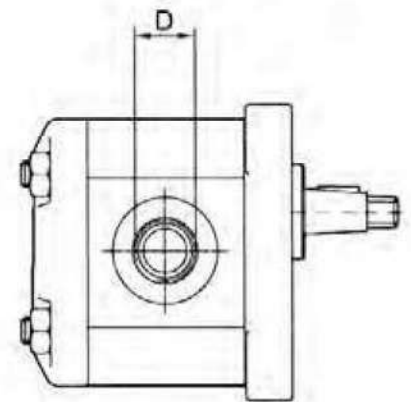
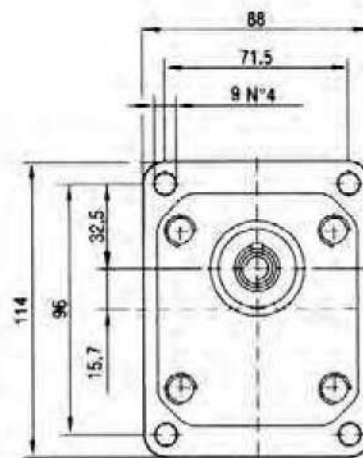
| Part Number | Displacement (cm <sup>3</sup> /rev) | Continuous Pressure (bar) | Intermittent Pressure (bar) | Max Speed (rpm) | Min Speed (rpm) | L (mm) | C (mm) | Inlet D | Outlet d | Unpacked weight (kg) | Price (Ex. GST) |
|-------------|-------------------------------------|---------------------------|-----------------------------|-----------------|-----------------|--------|--------|---------|----------|----------------------|-----------------|
| P2B0D4TOG   | 4                                   | 270                       | 285                         | 4000            | 600             | 92.7   | 44.4   | G1/2    | G1/2     | 3.5                  |                 |
| P2B0D6TOG   | 6                                   | 270                       | 285                         | 4000            | 600             | 96     | 46     | G1/2    | G1/2     | 3.6                  |                 |
| P2B0D8TOG   | 8                                   | 270                       | 285                         | 3500            | 500             | 99.3   | 47.7   | G3/4    | G1/2     | 3.7                  |                 |
| P2B0D12TOG  | 12                                  | 270                       | 285                         | 3000            | 500             | 105.9  | 51     | G3/4    | G1/2     | 3.8                  |                 |
| P2B0D16TOG  | 16                                  | 250                       | 265                         | 4000            | 500             | 112.7  | 54.4   | G3/4    | G1/2     | 4                    |                 |
| P2B0D20TOG  | 20                                  | 220                       | 235                         | 3200            | 400             | 119.3  | 57.7   | G3/4    | G1/2     | 4.2                  |                 |
| P2B0D25TOG  | 25                                  | 200                       | 215                         | 3000            | 400             | 127.6  | 61.8   | G3/4    | G1/2     | 4.4                  |                 |

### Dimensions

Outlet



Inlet

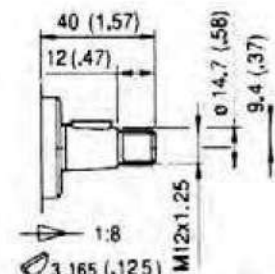


### Features

- Aluminium construction with cast iron front and rear housings
- Can be used as front of a tandem pump
- Rotation is field reversible
- Torque shaft retaining Nut M12 to 50 Nm

### Seal Kit

| Part Number | List Price |
|-------------|------------|
| P2          |            |



**TO**  
Max Torque 200Nm

# GEAR PUMPS



## High Pressure Gear Pumps

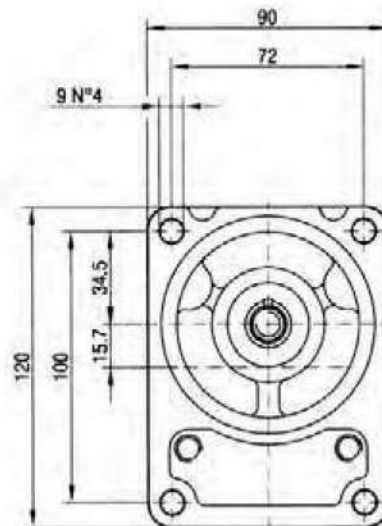
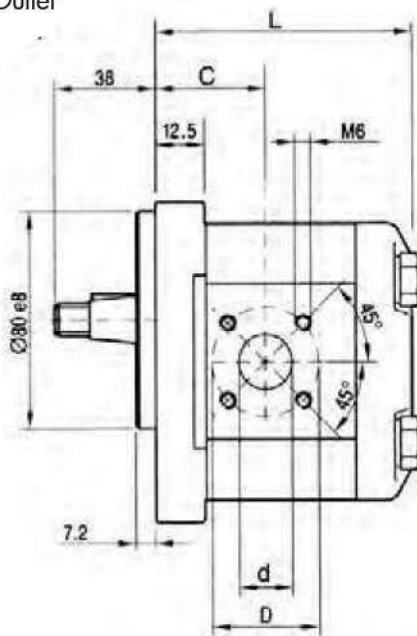
### P2B2 Group 2 'Bosch' Mount

#### Bosch Mount Group 2 with 1:5 Tapered Shaft - Clockwise Rotation

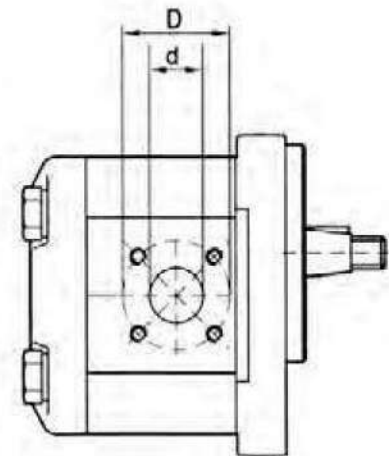
| Part Number | Displacement (cm <sup>3</sup> /rev) | Continuous Pressure (bar) | Intermittent Pressure (bar) | Max Speed (rpm) | Min Speed (rpm) | L (mm) | C (mm) | Inlet D (mm) | Inlet d (mm) | Outlet D (mm) | Outlet d (mm) | Unpacked weight (kg) | Price (Ex. GST) |
|-------------|-------------------------------------|---------------------------|-----------------------------|-----------------|-----------------|--------|--------|--------------|--------------|---------------|---------------|----------------------|-----------------|
| P2B2D4T1F   | 4                                   | 270                       | 285                         | 4000            | 600             | 92.7   | 39.9   | 40           | 15           | 35            | 15            | 3.5                  |                 |
| P2B2D6T1F   | 6                                   | 270                       | 285                         | 4000            | 600             | 96     | 41.1   | 40           | 15           | 35            | 15            | 3.6                  |                 |
| P2B2D8T1F   | 8                                   | 270                       | 285                         | 3500            | 500             | 99.3   | 43.2   | 40           | 15           | 35            | 15            | 3.7                  |                 |
| P2B2D12T1F  | 12                                  | 270                       | 285                         | 3000            | 500             | 105.9  | 47.5   | 40           | 20           | 35            | 15            | 3.8                  |                 |
| P2B2D14T1F  | 14                                  | 250                       | 265                         | 4000            | 500             | 109.3  | 47.5   | 40           | 20           | 35            | 15            | 4                    |                 |
| P2B2D16T1F  | 16                                  | 250                       | 265                         | 4000            | 500             | 112.7  | 47.5   | 40           | 20           | 35            | 15            | 4.2                  |                 |
| P2B2D20T1F  | 20                                  | 220                       | 235                         | 3200            | 400             | 119.3  | 47.5   | 40           | 20           | 35            | 15            | 4.4                  |                 |
| P2B2D20T1F  | 22                                  | 220                       | 235                         | 3000            | 400             | 122.6  | 55.1   | 40           | 20           | 35            | 15            | 4.6                  |                 |

## Dimensions

### Outlet



### Inlet

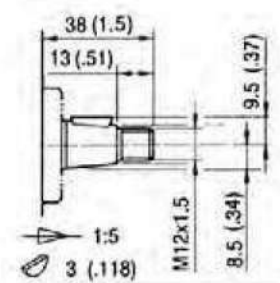


## Features

- Aluminium construction with cast iron front and rear housings
- Rotation is field reversible
- Torque shaft retaining Nut M12 x 1.5 to 50 Nm

## Seal Kit

| Part Number | List Price |
|-------------|------------|
| P2          |            |



**TO**

Max Torque 180 Nm



## High Pressure Gear Pumps

### P2A0 SAE-A 2 Bolt Mount

#### SAE-A 2 Bolt Mount with 5/8" or 3/4" Straight Key - Clockwise Rotation

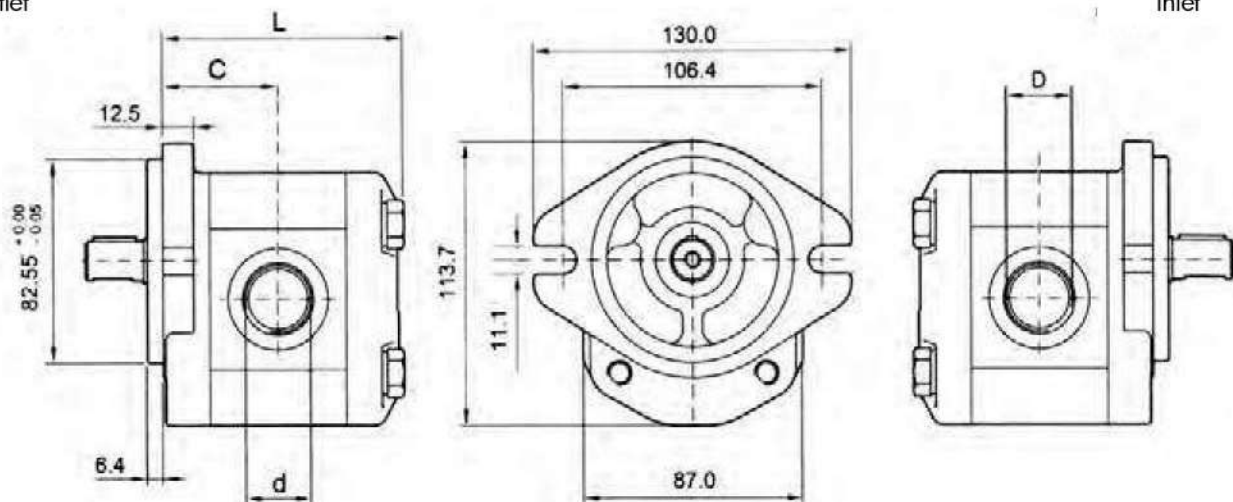
| Part Number | Displacement (cm <sup>3</sup> /rev) | Continuous Pressure (bar) | Intermittent Pressure (bar) | Max Speed (rpm) | Min Speed (rpm) | L (mm) | C (mm) | Inlet D     | Outlet d | Unpacked weight (kg) | Price (Ex. GST) |
|-------------|-------------------------------------|---------------------------|-----------------------------|-----------------|-----------------|--------|--------|-------------|----------|----------------------|-----------------|
| P2A0D4**U   | 4                                   | 270                       | 285                         | 4000            | 600             | 92.7   | 44.4   | 1-1/16" UNO | 7/8" UNO | 3.7                  |                 |
| P2A0D6**U   | 6                                   | 270                       | 285                         | 4000            | 600             | 96     | 46     | 1-1/16" UNO | 7/8" UNO | 3.8                  |                 |
| P2A0D8**U   | 8                                   | 270                       | 285                         | 3500            | 500             | 99.3   | 47.7   | 1-1/16" UNO | 7/8" UNO | 3.9                  |                 |
| P2A0D12**U  | 12                                  | 270                       | 285                         | 3000            | 500             | 105.9  | 51     | 1-1/16" UNO | 7/8" UNO | 4.0                  |                 |
| P2A0D16**U  | 16                                  | 250                       | 265                         | 4000            | 500             | 112.7  | 54.4   | 1-1/16" UNO | 7/8" UNO | 4.3                  |                 |
| P2A0D20**U  | 20                                  | 220                       | 235                         | 3200            | 400             | 119.3  | 57.7   | 1-1/16" UNO | 7/8" UNO | 4.4                  |                 |
| P2A0D25**U  | 25                                  | 200                       | 215                         | 3000            | 400             | 127.6  | 61.8   | 1-1/16" UNO | 7/8" UNO | 4.7                  |                 |

\*\*Note: Insert Shaft Code C0 for 5/8" Straight Key, or C1 for 3/4" Straight Key

### Dimensions

Outlet

Inlet

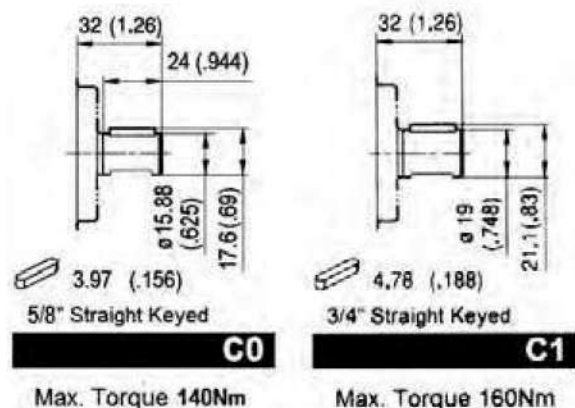


### Features

- Aluminium construction with cast iron front and rear housings
- Rotation is field reversible
- Can be used as front of a tandem pump

### Seal Kit

| Part Number | List Price |
|-------------|------------|
| P2          |            |





## High Pressure Gear Pumps

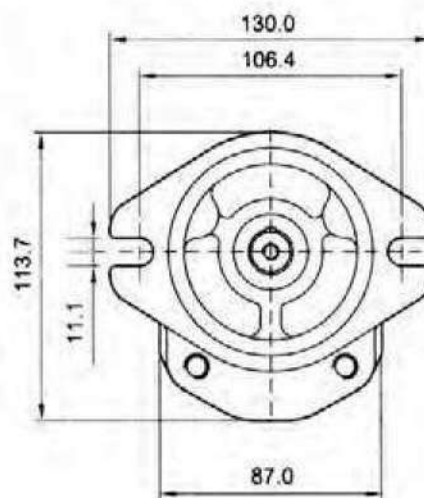
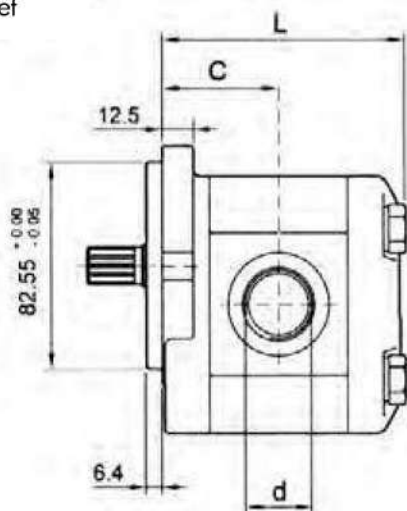
### P2A0 SAE-A 2 Bolt Mount

#### SAE-A 2 Bolt Mount with 5/8" 9 Tooth Spine - Clockwise Rotation

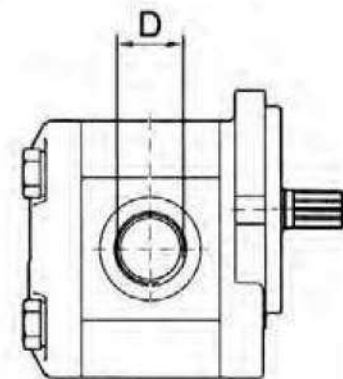
| Part Number | Displacement (cm <sup>3</sup> /rev) | Continuous Pressure (bar) | Intermittent Pressure (bar) | Max Speed (rpm) | Min Speed (rpm) | L (mm) | C (mm) | Inlet D     | Outlet d | Unpacked weight (kg) | Price (Ex. GST) |
|-------------|-------------------------------------|---------------------------|-----------------------------|-----------------|-----------------|--------|--------|-------------|----------|----------------------|-----------------|
| P2A0D4S0U   | 4                                   | 270                       | 285                         | 4000            | 600             | 92.7   | 44.4   | 1-1/16" UNO | 7/8" UNO | 3.7                  |                 |
| P2A0D6S0U   | 6                                   | 270                       | 285                         | 4000            | 600             | 96     | 46     | 1-1/16" UNO | 7/8" UNO | 3.8                  |                 |
| P2A0D8S0U   | 8                                   | 270                       | 285                         | 3500            | 500             | 99.3   | 47.7   | 1-1/16" UNO | 7/8" UNO | 3.9                  |                 |
| P2A0D12S0U  | 12                                  | 270                       | 285                         | 3000            | 500             | 105.9  | 51     | 1-1/16" UNO | 7/8" UNO | 4.0                  |                 |
| P2A0D16S0U  | 16                                  | 250                       | 265                         | 4000            | 500             | 112.7  | 54.4   | 1-1/16" UNO | 7/8" UNO | 4.3                  |                 |
| P2A0D20S0U  | 20                                  | 220                       | 235                         | 3200            | 400             | 119.3  | 57.7   | 1-1/16" UNO | 7/8" UNO | 4.4                  |                 |
| P2A0D25S0U  | 25                                  | 200                       | 215                         | 3000            | 400             | 127.6  | 61.8   | 1-1/16" UNO | 7/8" UNO | 4.7                  |                 |

## Dimensions

Outlet



Inlet

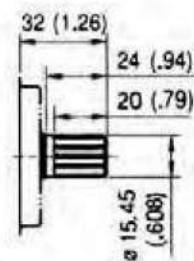


## Features

- Aluminium construction with cast iron front and rear housings
- Rotation is field reversible
- Can be used as front of a tandem pump

## Seal Kit

| Part Number | List Price |
|-------------|------------|
| P2          |            |



5/8 9 Tooth 16/32-30°  
FLAT ROOT SIDE FIT

**S0**

Max. Torque 185 Nm



## High Pressure Gear Pumps

### P3A0 SAE-B 2 Bolt Mount

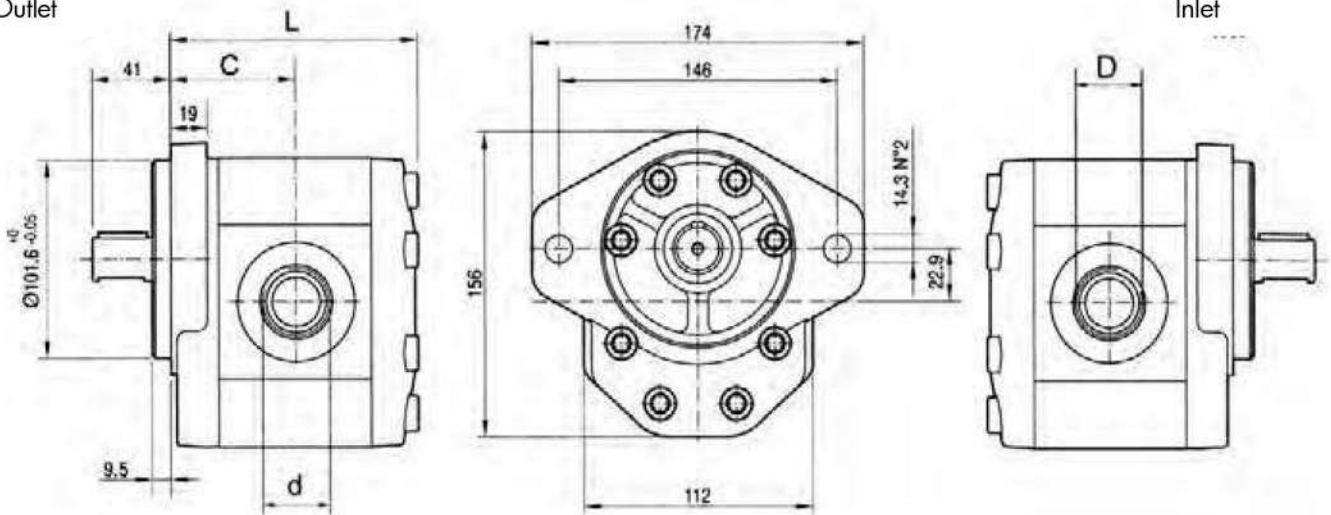
#### SAE-B Bolt Mount with 7/8" Straight Key - Clockwise Rotation

| Part Number | Displacement (cm <sup>3</sup> /rev) | Continuous Pressure (bar) | Intermittent Pressure (bar) | Max Speed (rpm) | Min Speed (rpm) | L (mm) | C (mm) | Inlet D     | Outlet d    | Unpacked weight (kg) | Price (Ex. GST) |
|-------------|-------------------------------------|---------------------------|-----------------------------|-----------------|-----------------|--------|--------|-------------|-------------|----------------------|-----------------|
| P3A0D22C2U  | 22                                  | 250                       | 265                         | 3500            | 600             | 130    | 64     | 1-5/16" UNO | 1-1/16" UNO | 9                    |                 |
| P3A0D33C2U  | 33                                  | 230                       | 250                         | 3000            | 500             | 139    | 68     | 1-5/16" UNO | 1-1/16" UNO | 9.6                  |                 |
| P3A0D46C2U  | 46                                  | 230                       | 250                         | 3000            | 500             | 152    | 75     | 1-5/8" UNO  | 1-1/16" UNO | 10.2                 |                 |
| P3A0D52C2U  | 52                                  | 220                       | 240                         | 3000            | 500             | 156    | 78     | 1-5/8" UNO  | 1-1/16" UNO | 10.5                 |                 |
| P3A0D63C2U  | 63                                  | 200                       | 230                         | 2800            | 400             | 168    | 83     | 1-7/8" UNO  | 1-5/16" UNO | 10.8                 |                 |

## Dimensions

Outlet

Inlet

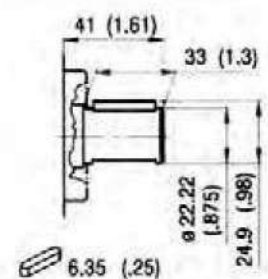


## Features

- Aluminium construction with cast iron front and rear housings
- Rotation is field reversible

## Seal Kit

| Part Number | List Price |
|-------------|------------|
| P3          |            |



7/8 Straight Keyed

**C2**

Max Torque 400Nm





## High Pressure Gear Pumps

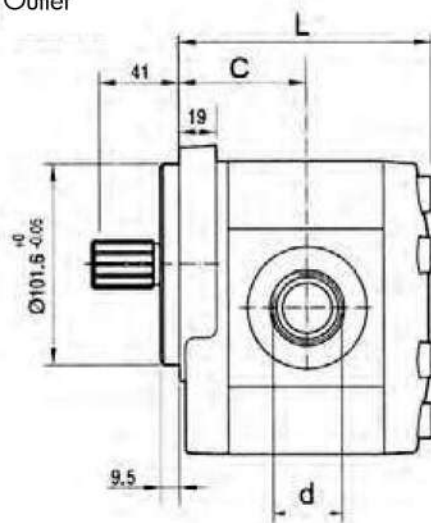
### P3A0 SAE-B 2 Bolt Mount

#### SAE-B 2 Bolt Mount with 7/8" 13 Tooth Spline - Clockwise Rotation

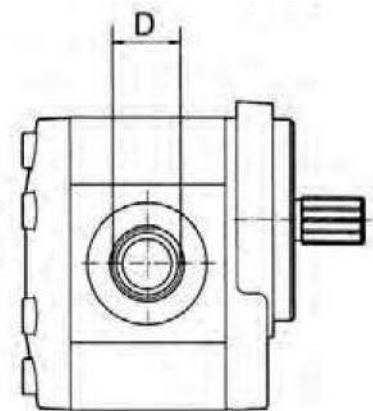
| Part Number | Displacement (cm <sup>3</sup> /rev) | Continuous Pressure (bar) | Intermittent Pressure (bar) | Max Speed (rpm) | Min Speed (rpm) | L (mm) | C (mm) | Inlet D     | Outlet d    | Unpacked weight (kg) | Price (Ex. GST) |
|-------------|-------------------------------------|---------------------------|-----------------------------|-----------------|-----------------|--------|--------|-------------|-------------|----------------------|-----------------|
| P3A0D22S0U  | 22                                  | 250                       | 265                         | 3500            | 600             | 130    | 64     | 1-5/16" UNO | 1-1/16" UNO | 9                    |                 |
| P3A0D33S0U  | 33                                  | 230                       | 250                         | 3000            | 500             | 139    | 68     | 1-5/16" UNO | 1-1/16" UNO | 9.6                  |                 |
| P3A0D46S0U  | 46                                  | 230                       | 250                         | 3000            | 500             | 152    | 75     | 1-5/8" UNO  | 1-1/16" UNO | 10.2                 |                 |
| P3A0D52S0U  | 52                                  | 220                       | 240                         | 3000            | 500             | 156    | 78     | 1-5/8" UNO  | 1-1/16" UNO | 10.5                 |                 |
| P3A0D63S0U  | 63                                  | 200                       | 230                         | 2800            | 400             | 168    | 83     | 1-7/8" UNO  | 1-5/16" UNO | 10.8                 |                 |

### Dimensions

Outlet



Inlet

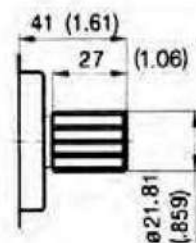


### Features

- Aluminium construction with cast iron front and rear housings
- Rotation is field reversible

### Seal Kit

| Part Number | List Price |
|-------------|------------|
| P3          |            |



7/8 13 Tooth 16/32-30°  
FLAT ROOT SIDE FIT

S0

Max Torque 500Nm



## High Pressure Double Pumps

### Rear Pumps

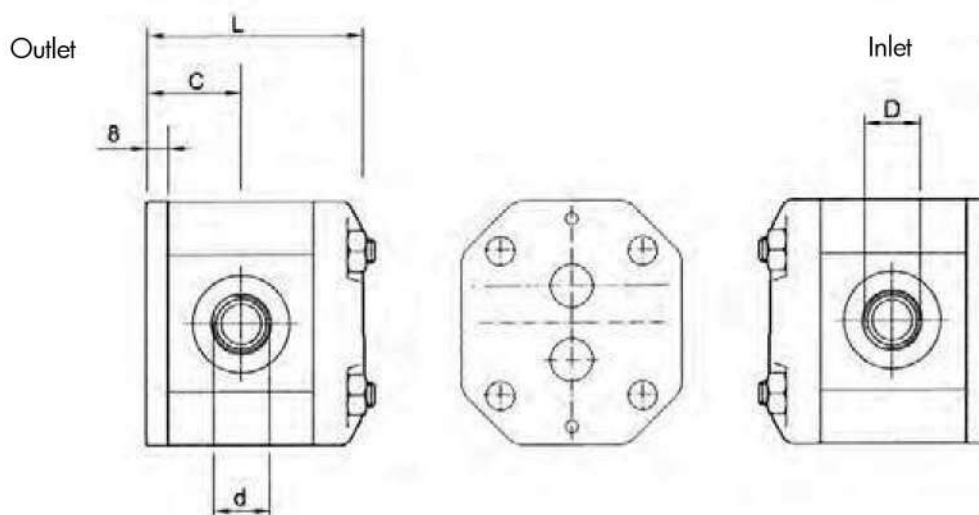
Rear of Tandem Group 2 with Female Spline - Clockwise Rotation - BSP Ported (Recommended for P2B0- type pumps)

| Part Number | Displacement (cm <sup>3</sup> /rev) | Continuous Pressure (bar) | Intermittent Pressure (bar) | Max Speed (rpm) | Min Speed (rpm) | L (mm) | C (mm) | Inlet D | Outlet d | Unpacked weight (kg) | Price (Ex. GST) |
|-------------|-------------------------------------|---------------------------|-----------------------------|-----------------|-----------------|--------|--------|---------|----------|----------------------|-----------------|
| P2FAD4L0    | 4                                   | 270                       | 285                         | 4000            | 600             | 90.2   | 37.4   | G1/2    | G1/2     | 2.4                  |                 |
| P2FAD6L0    | 6                                   | 270                       | 285                         | 4000            | 600             | 93.5   | 38.6   | G1/2    | G1/2     | 2.5                  |                 |
| P2FAD8L1    | 8                                   | 270                       | 285                         | 3500            | 500             | 96.8   | 40.7   | G3/4    | G1/2     | 2.6                  |                 |
| P2FAD12L1   | 12                                  | 270                       | 285                         | 3000            | 500             | 103.4  | 45     | G3/4    | G1/2     | 2.7                  |                 |
| P2FAD16L1   | 16                                  | 250                       | 265                         | 4000            | 500             | 110.2  | 45     | G3/4    | G1/2     | 3                    |                 |
| P2FAD20L1   | 20                                  | 220                       | 235                         | 3200            | 400             | 116.8  | 45     | G3/4    | G1/2     | 3.2                  |                 |

Rear of Tandem Group 2 with Female Spline - Clockwise Rotation - UNO Ported (Recommended for P2A0- type pumps)

| Part Number | Displacement (cm <sup>3</sup> /rev) | Continuous Pressure (bar) | Intermittent Pressure (bar) | Max Speed (rpm) | Min Speed (rpm) | L (mm) | C (mm) | Inlet D     | Outlet d | Unpacked weight (kg) | Price (Ex. GST) |
|-------------|-------------------------------------|---------------------------|-----------------------------|-----------------|-----------------|--------|--------|-------------|----------|----------------------|-----------------|
| P2FAD4U0    | 4                                   | 270                       | 285                         | 4000            | 600             | 90.2   | 37.4   | 1-1/16" UNO | 7/8" UNO | 2.4                  |                 |
| P2FAD6U0    | 6                                   | 270                       | 285                         | 4000            | 600             | 93.5   | 38.6   | 1-1/16" UNO | 7/8" UNO | 2.5                  |                 |
| P2FAD8U0    | 8                                   | 270                       | 285                         | 3500            | 500             | 96.8   | 40.7   | 1-1/16" UNO | 7/8" UNO | 2.6                  |                 |
| P2FAD12U0   | 12                                  | 270                       | 285                         | 3000            | 500             | 103.4  | 45     | 1-1/16" UNO | 7/8" UNO | 2.7                  |                 |
| P2FAD16U0   | 16                                  | 250                       | 265                         | 4000            | 500             | 110.2  | 45     | 1-1/16" UNO | 7/8" UNO | 3                    |                 |
| P2FAD20U0   | 20                                  | 220                       | 235                         | 3200            | 400             | 116.8  | 45     | 1-1/16" UNO | 7/8" UNO | 3.2                  |                 |

### Dimensions





## High Pressure Double Pumps

### Joining Kits

| Part Number | Joining Kits    | Price<br>(Ex. GST) |
|-------------|-----------------|--------------------|
| GRP2-GRP2   | Group 2+Group 2 |                    |

Note: Joining Kits and Tie Rod Kits are sold separately. Please select correct length Tie Rod Kit from the below chart.

### Tie Rod Kits - Group 2 to Group 2

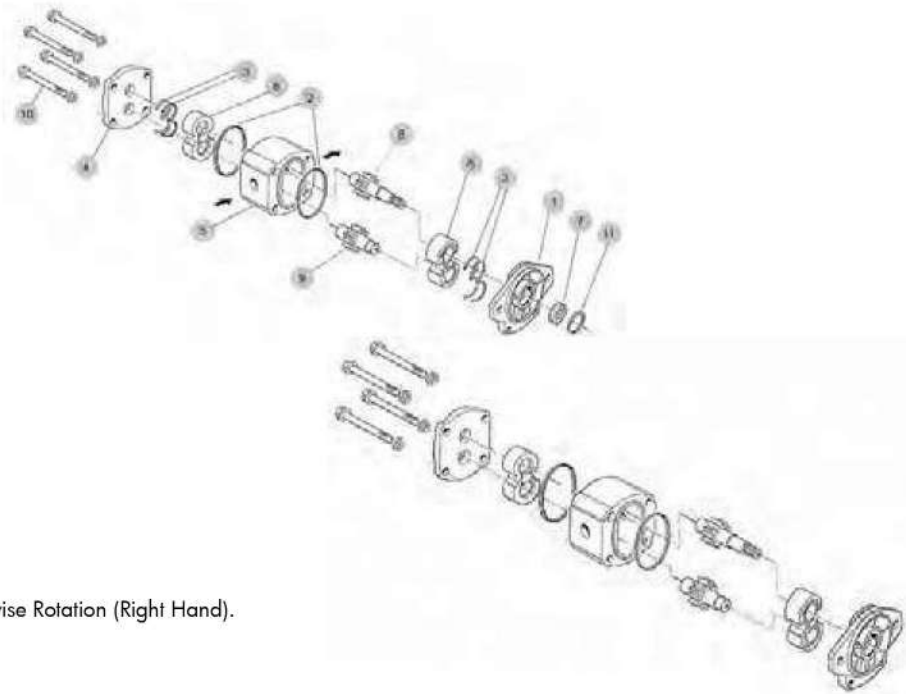
| Tie Rod Kit | Front Pump (cc/rev) | Rear Pump (cc/rev) | Price<br>(Ex. GST) |
|-------------|---------------------|--------------------|--------------------|
| BK170       | 4                   | 4                  |                    |
| BK170       | 6                   | 4                  |                    |
| BK170       | 6                   | 6                  |                    |
| BK170       | 8                   | 4                  |                    |
| BK170       | 8                   | 6                  |                    |
| BK180       | 8                   | 8                  |                    |
| BK180       | 12                  | 4                  |                    |
| BK180       | 12                  | 6                  |                    |
| BK180       | 12                  | 8                  |                    |
| BK180       | 16                  | 4                  |                    |
| BK190       | 12                  | 12                 |                    |
| BK190       | 16                  | 6                  |                    |
| BK190       | 16                  | 8                  |                    |
| BK190       | 20                  | 4                  |                    |
| BK190       | 20                  | 6                  |                    |
| BK200       | 16                  | 12                 |                    |
| BK200       | 16                  | 16                 |                    |
| BK200       | 20                  | 8                  |                    |
| BK200       | 20                  | 12                 |                    |
| BK200       | 25                  | 4                  |                    |
| BK200       | 25                  | 6                  |                    |
| BK200       | 25                  | 8                  |                    |
| BK215       | 20                  | 16                 |                    |
| BK215       | 20                  | 20                 |                    |
| BK215       | 25                  | 12                 |                    |
| BK215       | 25                  | 16                 |                    |

Note: When assembling, tighten the bolts to the recommended Torque 44Nm.

## Changing Rotation

### Components

- 1 – Front Housing
- 2 – Body Seals
- 3 – Seals and back ups
- 4 – Rear housing
- 5 – Middle Housing
- 6 – Bushing
- 7 – Pressure Seal
- 8 – Drive Shaft
- 9 – Driven Shaft
- 10 – Bolts (qty 4)



Note: The pump shown above is Clockwise Rotation (Right Hand).

### Disassembly

- Step One:** Take out the four Bolts (item 10). Make sure Key is removed from shaft, if applicable
- Step Two:** Remove Front Cover (item 1) and Rear Cover (item 4).
- Step Three:** Pull out the Drive Shaft (item 8) this will also take pull out the Bushing (items 3 & 6).
- Step Four:** Take out the Driven Shaft (item 9) and the other Bushing (items 3 & 6), if it's still inside the Middle Housing (item 5). There should now be a clear hole though the Middle Housing.

### Reassembly

- Step Five:** Rotate the Middle Housing (item 5) 180 degrees so that the arrow is still on top pointing in the opposite direction.
- Step Six:** Put the Driven Shaft (item 9) back inside the bottom part of the Middle Housing (item 5) so that the through drive spline is facing the rear.
- Step Seven:** Now put the Drive Shaft (item 8) back inside the top part of the Middle Housing (item 5) so that the shaft is facing the front.
- Step Eight:** Connect the Bushings (items 3 & 6) back onto each side of the Middle Housing (item 5) making sure the seals are facing outwards and towards the outlet pressure port (see below pictures), otherwise the gears will cut the seals.
- Step Nine:** Assemble the Front and Rear Covers (items 1 & 4), then tighten the Bolts (item 10) to the recommended Torque 44 Nm.

