

CATFORD ENGINEERING

HYDRAULIC PRODUCTS



"A 100% Australian Owned & Operated Company"

Mobile : 0418 641566

Email : sales@catford.com.au



GM08 Monoblock 45LPM Control Valve

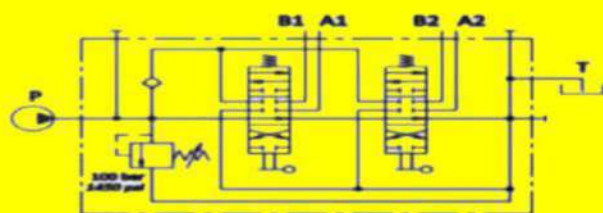
Part Numbers	Spools	Ports A	Ports B	Ports P	Ports T	Weight (KG)	A mm	B mm	Price Inc GST
GM08/1/YSD-X	One	3/8" BSP	3/8" BSP	1/2" BSP	1/2" BSP	3.1	73	104	\$376
GM08/2/YSD-X	Two	3/8" BSP	3/8" BSP	1/2" BSP	1/2" BSP	4.4	110	141	\$583
GM08/3/YSD-X	Three	3/8" BSP	3/8" BSP	1/2" BSP	1/2" BSP	5.7	147	178	\$630
GM08/4/YSD-X	Four	3/8" BSP	3/8" BSP	1/2" BSP	1/2" BSP	7.2	184	215	\$972
GM08/5/YSD-X	Five	3/8" BSP	3/8" BSP	1/2" BSP	1/2" BSP	8.7	221	252	\$1,182
GM08/6/YSD-X	Six	3/8" BSP	3/8" BSP	1/2" BSP	1/2" BSP	10.2	258	289	\$1,375

GM08 MONOBLOCK VALVES - 45 LPM

Product Specifications

Standard Configuration

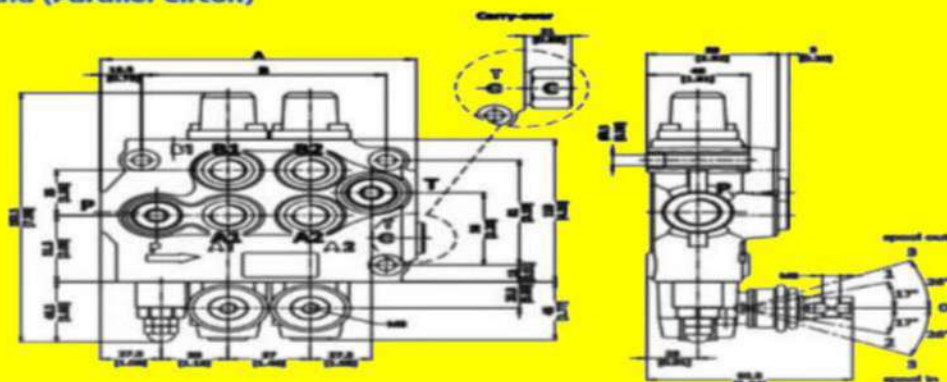
Website : www.catford.com.au



Description Example
GM08/2/YSD-YSD-X



Dimensional Data (Parallel Circuit)



CATFORD ENGINEERING

HYDRAULIC PRODUCTS



"A 100% Australian Owned & Operated Company"

Email : sales@catford.com.au



Mobile : 0418 641566
GM10 Monoblock 90 LPM Control Valve

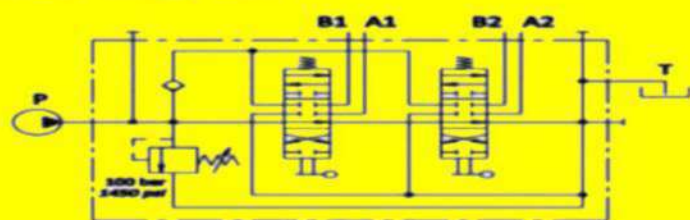
Part Numbers	Spools	Ports A	Ports B	Ports P	Ports T	Weight (KG)	A mm	B mm	Price Inc GST
GM10/1/YSD-X	One	1/2" BSP	1/2" BSP	1/2" BSP	3/4" BSP	5.8	130	100	\$636
GM10/2/YSD-X	Two	1/2" BSP	1/2" BSP	1/2" BSP	3/4" BSP	8.3	175	145	\$934
GM10/3/YSD-X	Three	1/2" BSP	1/2" BSP	1/2" BSP	3/4" BSP	10.9	220	190	\$1,209
GM10/4/YSD-X	Four	1/2" BSP	1/2" BSP	1/2" BSP	3/4" BSP	13.4	265	235	\$1,494
GM10/5/YSD-X	Five	1/2" BSP	1/2" BSP	1/2" BSP	3/4" BSP	16.5	310	280	\$1,809
GM10/6/YSD-X	Six	1/2" BSP	1/2" BSP	1/2" BSP	3/4" BSP	19.2	355	325	\$2,166

GM10 MONOBLOCK VALVES - 90 LPM

Product Specifications

Standard Configuration

Website : www.catford.com.au



Description Example
GM10/2/YSD-X



Dimensional Data (Parallel Circuit)

